A detailed historical map of Dubuque, Iowa, showing a dense grid of streets and numerous small, uniform houses. The map is oriented with North at the top. Several streets are labeled, including 'W. SEVENTH ST.', 'HILL ST.', 'JULIEN AVE.', and 'EIGHTH ST.'. The houses are arranged in neat rows, suggesting a planned urban layout. The map is in a sepia or aged brown tone.

# DUBUQUE'S BLACK HERITAGE SURVEY

*Telling a More Complete Story of our Community*



PROJECT SUPPORTED BY THE  
THROUGH THE

# IOWA DEPARTMENT OF CULTURAL AFFAIRS HISTORIC RESOURCE DEVELOPMENT PROGRAM



Wapsi Valley Archaeology  
Nurit Finn & Jacob Noble



Pearson Consulting  
Charles Pearson

Roots to Branches Genealogy  
Ricki King

Our Consultant Team



IOWA STATE HISTORICAL DEPARTMENT, DIVISION OF HISTORIC PRESERVATION

# DUBUQUE, IOWA

## Architectural Survey 1978

Photograph Roll 3 Frame 25  
1365/29A

Inventory 1090 GRACE TER.

STREET ADDRESS \_\_\_\_\_  
BUILDING NAME \_\_\_\_\_  
PRESENT OWNER \_\_\_\_\_  
Address \_\_\_\_\_

LEGAL DESCRIPTION \_\_\_\_\_

DATE OF CONSTRUCTION \_\_\_\_\_  
Source \_\_\_\_\_  
ARCHITECT/BUILDER \_\_\_\_\_

PRESENT USE \_\_\_\_\_  
DESIGNED USE \_\_\_\_\_  
Source \_\_\_\_\_

ACCESSIBILITY \_\_\_\_\_  
STATUS \_\_\_\_\_

BUILDING MATERIALS  
Foundation BRICK STONE  
Walls BRICK  
Trim WOOD  
Porch/Storefront WOOD  
Eaves/Cornice WOOD  
Roof CORRUGATED  
Chimney(s) BRICK

RES/UNR/NO  
CONDITION  
① 2 3 4  
② 2 3 4  
③ 2 3 4  
④ 2 3 4

MODIFICATIONS/ADDITIONS:  
THE ENTIRE STRUCTURE HAS  
BEEN SUBSTANTIALLY MODIFIED.

Facade N/S/E/W By \_\_\_\_\_ Date \_\_\_\_\_

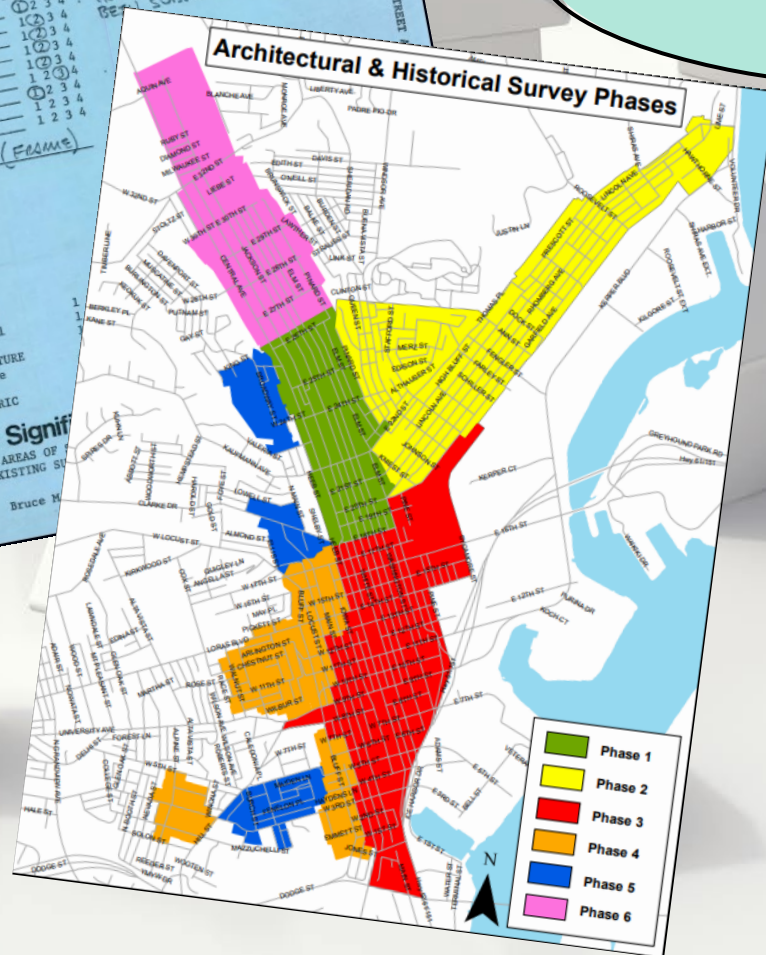
DESIGN FEATURES  
Style BRICK VERNACULAR (FRAME)  
Details of Note: \_\_\_\_\_

Interior Features: \_\_\_\_\_  
Site Features: \_\_\_\_\_

**Evaluation**  
I QUALITY Aesthetic  
Historical  
Rarity  
II ENVIRONMENTAL STATURE  
III CONTEXT Immediate  
Broad  
IV INTEGRITY OF FABRIC

**Architectural Significance**  
PROBABLE ADDITIONAL AREAS OF  
REPRESENTATION IN EXISTING SURVEY

SURVEY CONSULTANT: Bruce M. ...



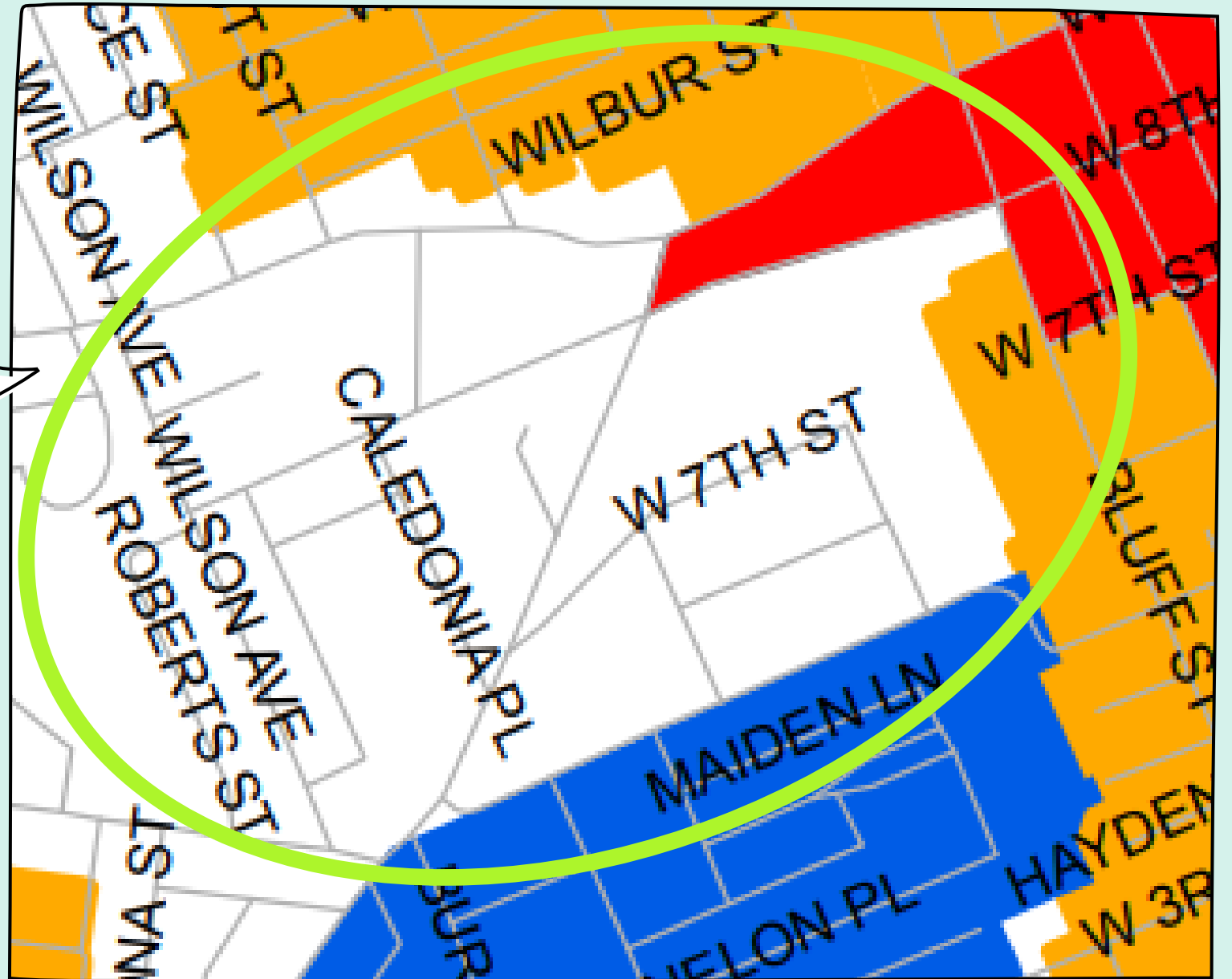
WHAT'S A  
SURVEY?

## KINDS OF SURVEYS

Windshield - visual, a record, superficial  
Intensive - windshield plus deep research

THE WEST 8<sup>TH</sup>  
STREET  
NEIGHBORHOOD

Home to Black Dubuquers  
when Iowa wasn't even a state



Things written down  
become TRUTH

Choices early on  
led to PROTECTION

Emphasis on FINE  
ARCHITECTURE

GAPS in History

BUT WE HAVE A SYSTEM

Let me tell you why it's  
**NOT WORKING**

What about areas of  
DISINVESTMENT?

Who were our  
community  
LEADERS?

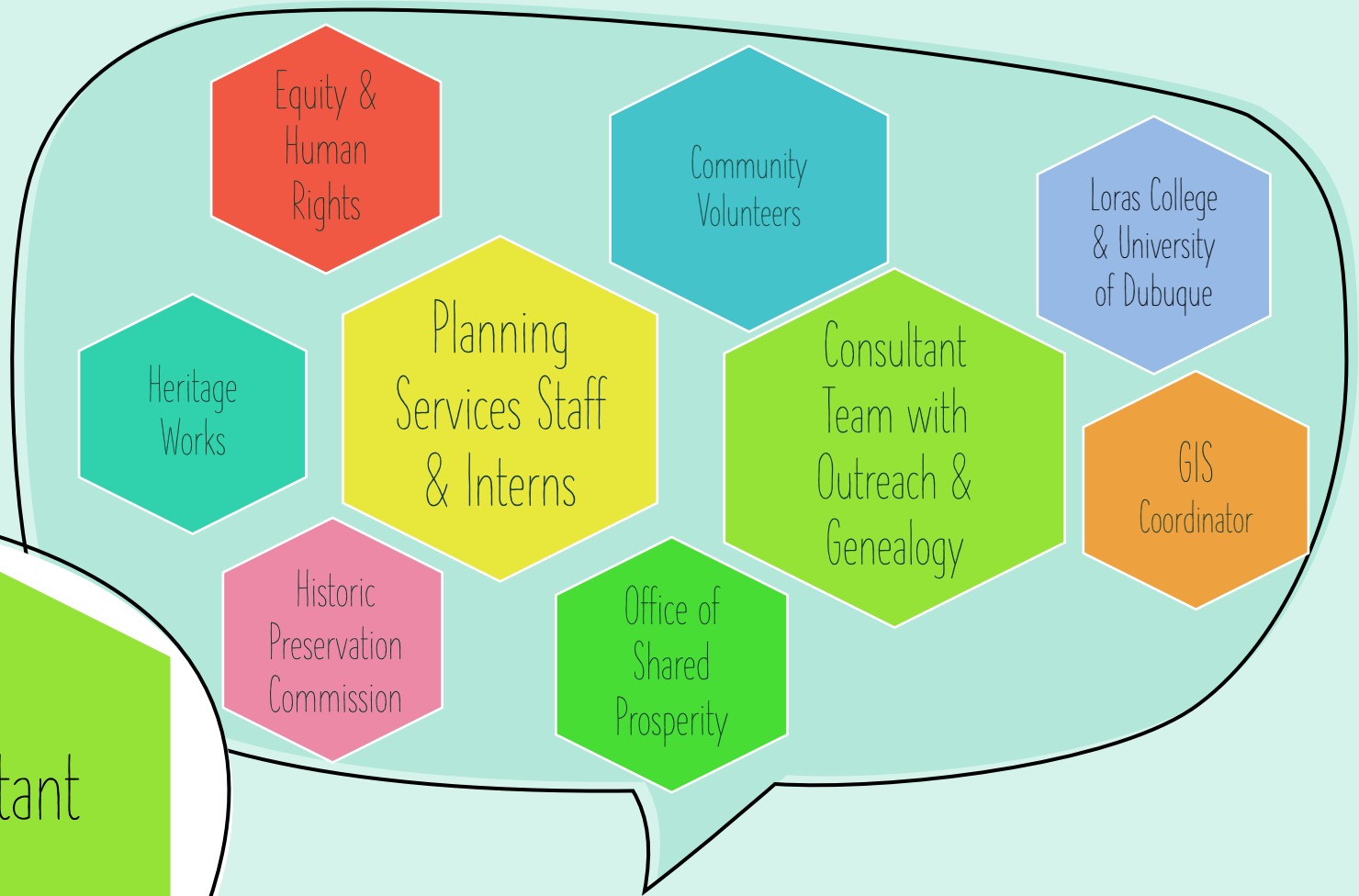
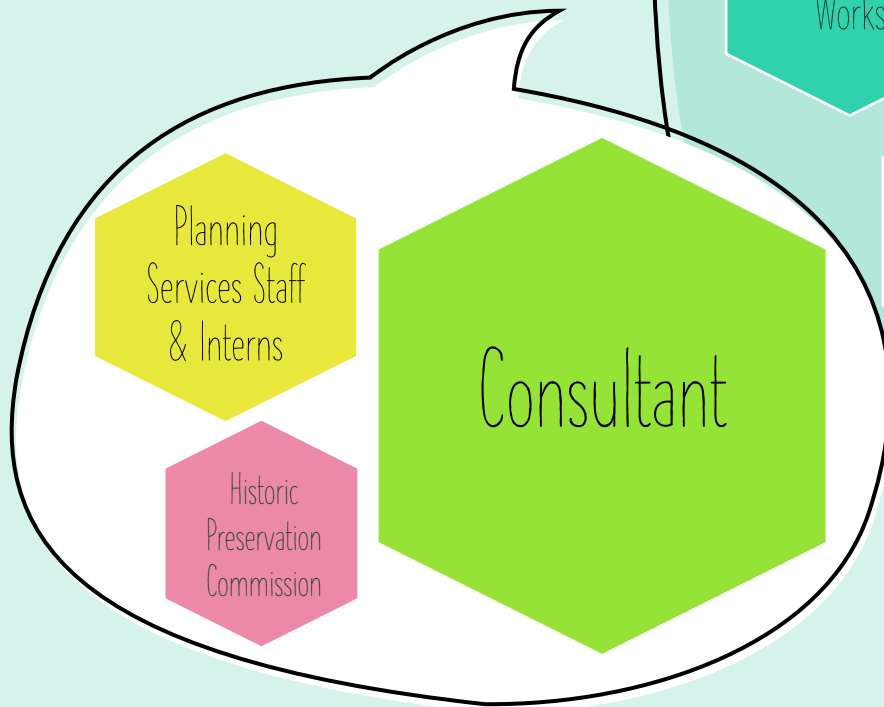
What if the  
PLACE is gone?

What are we VALUING?

IF WE CONTINUE TO USE THE  
SAME TOOLS & METHODS ...

WE WILL CONTINUE TO GET  
THE SAME RESULTS

Dubuque's Previous Surveys



Black Heritage Survey



# A DIFFERENT APPROACH



Focus on  
People & Families

Find Places that  
Relate to Them

*Regardless of Whether  
they Still Exist*



The Scott Family – West 8<sup>th</sup> Street Residents since the 1940s



# CREATING THE GIS STORYMAP

Sr. Lucy Williams, OSF,  
at Corpus Christi Elementary in Chicago





VISIT OUR GIS STORYMAP

THE FINDING DUBUQUE ATLAS

[www.cityofdubuque.org/blackheritagesurvey](http://www.cityofdubuque.org/blackheritagesurvey)



Gibbs family home at 611 W. 8th Street - Sanborn  
Fire Insurance Maps 1950

