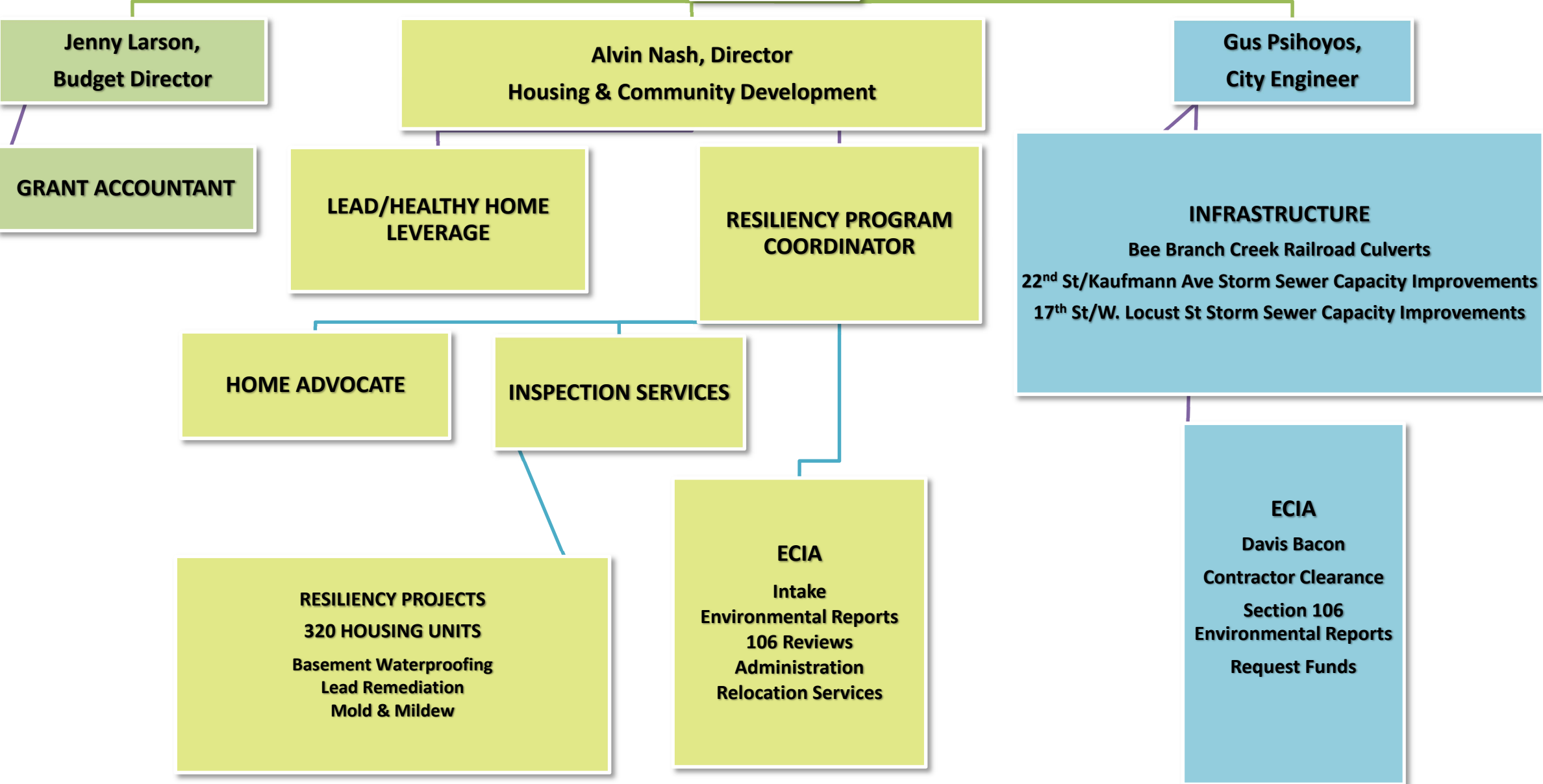


# NATIONAL DISASTER RESILIENCE GRANT



**Jenny Larson,  
Budget Director**

**Alvin Nash, Director  
Housing & Community Development**

**Gus Psihoyos,  
City Engineer**

**GRANT ACCOUNTANT**

**LEAD/HEALTHY HOME  
LEVERAGE**

**RESILIENCY PROGRAM  
COORDINATOR**

**INFRASTRUCTURE**  
Bee Branch Creek Railroad Culverts  
22<sup>nd</sup> St/Kaufmann Ave Storm Sewer Capacity Improvements  
17<sup>th</sup> St/W. Locust St Storm Sewer Capacity Improvements

**HOME ADVOCATE**

**INSPECTION SERVICES**

**RESILIENCY PROJECTS**  
320 HOUSING UNITS  
Basement Waterproofing  
Lead Remediation  
Mold & Mildew

**ECIA**  
Intake  
Environmental Reports  
106 Reviews  
Administration  
Relocation Services

**ECIA**  
Davis Bacon  
Contractor Clearance  
Section 106  
Environmental Reports  
Request Funds